

## Thank You

Thank you for choosing Humminbird®, America's #1 name in fishfinders. Humminbird® has built its reputation by manufacturing top-quality, thoroughly reliable marine equipment. Genuine Humminbird® accessories offer the opportunity to upgrade and expand the capabilities of your Humminbird® product.

## About Thru-Hull Installation

Following are instructions for the installation of the Bronze Thru-Hull Transducer. We encourage you to read these instructions thoroughly to fully benefit from your Humminbird® accessory. This accessory requires drilling a hole in the hull of the boat; therefore, installation should be performed by a qualified marine technician.

Prior to installation, test the transducer to ensure that no damage occurred during shipping. After connecting the transducer to the fishfinder, hold the transducer in the water over the side of the boat to confirm proper operation. Determine the best mounting location for the transducer. Outside the boat, the best location will be aft midship, as close to the centerline of the boat as possible. The transducer should be mounted forward of the propellers on inboard boats, and separated adequately from other transducers, strakes, rivet lines, or other protrusions. Inside the boat, there must be room to access the mounting location for installation and cable routing.

*NOTE: This type of transducer installation is not recommended for trailerable boats.*

Additionally, if the selected mounting location has a hull deadrise angle of 10 degrees or greater, a fairing block should be used to level the transducer housing and direct the sonar signal straight down.

## Before You Start

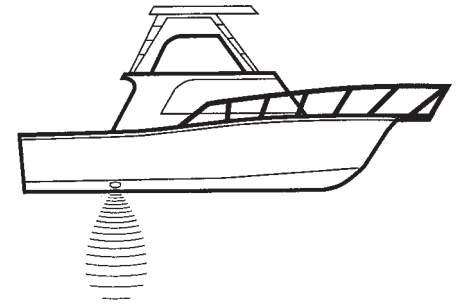
If you find that any items are missing from your installation kit, call our Customer Resource Center at 1-800-633-1468.

In addition to the hardware supplied with your transducer, you will need a drill, a small drill bit for a pilot hole, a hole saw to fit the threaded stem of the transducer, a large adjustable wrench, and marine sealant.

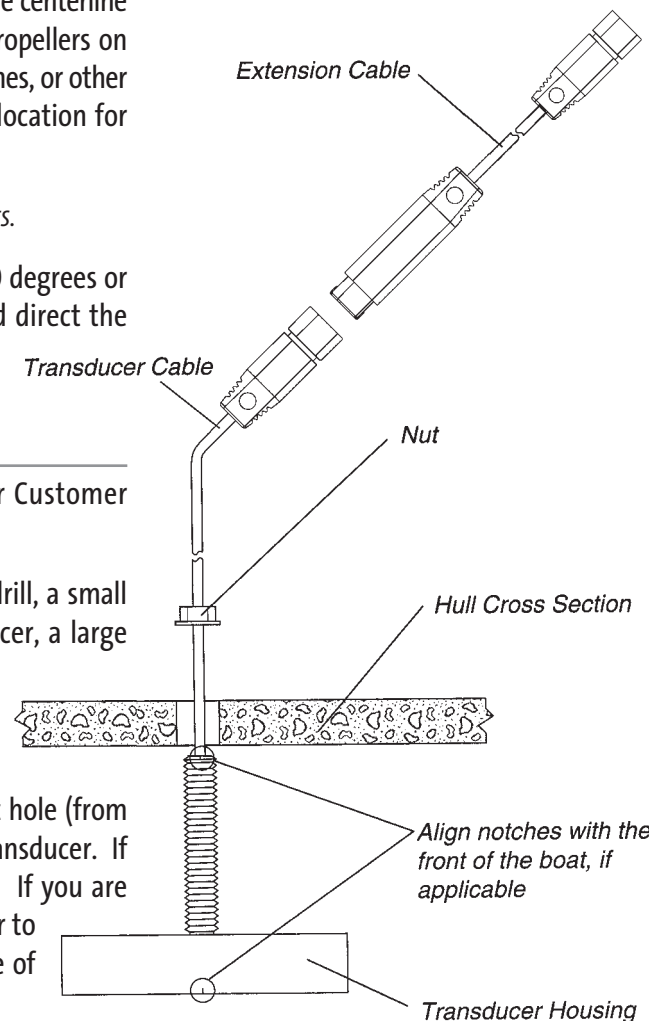
## Attaching the Transducer

Select a location for the transducer and drill a small pilot hole. Use the pilot hole (from the outside of the hull) to drill a hole sized to fit the threaded stem of the transducer. If you are using a fairing block, drill the hole perpendicular to the water line. If you are mounting the transducer body directly to the hull, drill the hole perpendicular to the hull. Thoroughly clean and deburr the drilled hole and clean the outside of the hull.

If you are using a fairing block, the block should be cut to match the angle of the deadrise of the hull. Two pieces will be required. The first piece mounts outside the hull and is shaped to match the profile of the transducer. The second piece mounts inside the hull



Thru-Hull Installation



## Bronze Thru-Hull Transducer

and provides a level surface for the fasteners. A fairing block (usually made of wood) can also serve to create a hydrodynamic water flow around the transducer body. A fairing block is required for round body transducers. The design and fabrication of this block varies greatly with different hull shapes; therefore, it should be customized by a qualified marine technician.

If the transducer is round, a notch on the housing and stem indicates the forward side of the transducer. This type of transducer is directional in nature and must be aligned with the front of the boat (the direction of travel). **Failure to align the transducer notches with the front of the boat will result in incorrect bottom readings.**

Temporarily install the transducer to check the fit. Then apply a generous amount of marine sealant or slow curing epoxy inside the drilled hole and along the mating surfaces of the transducer housing. If you are using a fairing block, seal the mating edges of the block as well.

Insert the transducer into the drilled hole from outside the boat, then install the nut onto the threaded stem from inside the boat. If you are using a fairing block outside the hull, you must use a similar block inside the hull to provide a level bearing surface. Tighten the nuts to 10 ft/lbs or use moderate pressure on an adjustable wrench. Do not over-tighten the nuts. If the hull or fairing block is wood, it will swell when wet.

## Routing the Cable

Connect the extension cables to the transducer housing and route the cable to your fishfinder. **Route and secure the cable, avoiding areas where it may be damaged or interfere with normal boating operations.**

Insert the transducer cables into the appropriate terminal slots on the unit. The slots are keyed to prevent reversed installation, so be careful not to force the connector into the holder.

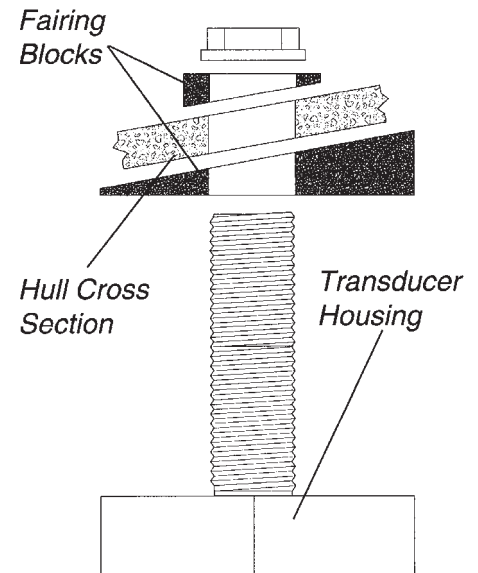
Refer to your owner's manual for the correct procedure for installing the connector holder to the mounting base.

Your fishfinder is now ready for operation.

## Customer Support

Your Humminbird® accessory is designed for trouble-free operation and is backed by the same one-year warranty as our fishfinders, VHF Marine-Band radios, and GPS Navigation equipment. Refer to your Humminbird® product Operations Manual for the specific details of this warranty. If you have any questions, call our Humminbird® Customer Resource Center at 1-800-633-1468. Throughout the U.S. and Canada, hours are Monday-Friday 8:05 am to 4:30 pm Central Standard Time.

Humminbird  
678 Humminbird Lane  
Eufaula, AL 36027



*Fairing Block Assembly to Hull*